

User's and Service Guide

Agilent Technologies 11904S 2.4 mm/2.92 mm Adapter Set

This manual applies to 11904S connector adapter set with serial number 2834A00101 or higher.



Agilent Part Number: 11904-90009

Printed in USA

Print Date: November 2004

Supersedes: July 2004

© Copyright 1994–1996, 2002, 2004 Agilent Technologies, Inc. All rights reserved.

Documentation Warranty

THE MATERIAL CONTAINED IN THIS DOCUMENT IS PROVIDED "AS IS," AND IS SUBJECT TO BEING CHANGED, WITHOUT NOTICE, IN FUTURE EDITIONS. FURTHER, TO THE MAXIMUM EXTENT PERMITTED BY APPLICABLE LAW, AGILENT DISCLAIMS ALL WARRANTIES, EITHER EXPRESS OR IMPLIED WITH REGARD TO THIS MANUAL AND ANY INFORMATION CONTAINED HEREIN, INCLUDING BUT NOT LIMITED TO THE IMPLIED WARRANTIES OF MERCHANTABILITY AND FITNESS FOR A PARTICULAR PURPOSE. AGILENT SHALL NOT BE LIABLE FOR ERRORS OR FOR INCIDENTAL OR CONSEQUENTIAL DAMAGES IN CONNECTION WITH THE FURNISHING, USE, OR PERFORMANCE OF THIS DOCUMENT OR ANY INFORMATION CONTAINED HEREIN. SHOULD AGILENT AND THE USER HAVE A SEPARATE WRITTEN AGREEMENT WITH WARRANTY TERMS COVERING THE MATERIAL IN THIS DOCUMENT THAT CONFLICT WITH THESE TERMS, THE WARRANTY TERMS IN THE SEPARATE AGREEMENT WILL CONTROL.

DFARS/Restricted Rights Notice

If software is for use in the performance of a U.S. Government prime contract or subcontract, Software is delivered and licensed as "Commercial computer software" as defined in DFAR 252.227-7014 (June 1995), or as a "commercial item" as defined in FAR 2.101(a) or as "Restricted computer software" as defined in FAR 52.227-19 (June 1987) or any equivalent agency regulation or contract clause. Use, duplication or disclosure of Software is subject to Agilent Technologies' standard commercial license terms, and non-DOD Departments and Agencies of the U.S. Government will receive no greater than Restricted Rights as defined in FAR 52.227-19(c)(1-2) (June 1987). U.S. Government users will receive no greater than Limited Rights as defined in FAR 52.227-14 (June 1987) or DFAR 252.227-7015 (b)(2) (November 1995), as applicable in any technical data.

Printing Copies of Documentation from the Web

To print copies of documentation from the Web, download the PDF file from the Agilent web site:

- Go to <http://www.agilent.com>.
- Enter the document's part number (located on the title page) in the **Quick Search** box.
- Click **GO**.
- Click on the hyperlink for the document.
- Click the printer icon located in the tool bar.

Contents

1 General Information

Adapter Set Overview	1-2
Adapter Set Contents	1-2
Calibration Definitions Disk	1-2
Adapters (2.4 mm and 2.92 mm)	1-2
Compatible Network Analyzers	1-3
Connector Adapter Sets Documented in This Manual	1-3
Equipment Required but Not Supplied	1-3
Incoming Inspection	1-3
Recording the Device Serial Numbers	1-4
Clarifying the Sex of Connectors	1-4
Preventive Maintenance	1-5

2 Specifications

Environmental Requirements	2-2
Temperature—What to Watch Out For	2-2
Mechanical Characteristics	2-3
Pin Depth	2-3
Electrical Specifications	2-5
Residual Errors after Calibration	2-5
Certification	2-5

3 Use, Maintenance, and Care of the Devices

Electrostatic Discharge	3-2
Visual Inspection	3-3
Look for Obvious Defects and Damage First	3-3
Inspect the Mating Plane Surfaces	3-3
Slotted Connectors (2.92 mm)	3-4
Precision Slotless Connectors (2.4 mm)	3-4
Calibration Information	3-5
Full 2-Port Calibration Overview	3-5
Cleaning Connectors	3-10
Gaging Connectors	3-12
Connector Gage Accuracy	3-12
When to Gage Connectors	3-13
Gaging Procedures	3-13
Gaging 2.4 mm and 2.92 mm Connectors	3-13
Connections	3-16
How to Make a Connection	3-16
Operational Check	3-19
Connect the 2.4 mm Lowband Load	3-19
Handling and Storage	3-22

4 Performance Verification

Introduction	4-2
How Agilent Verifies the Devices in Your Kit	4-2
Recertification	4-3
How Often to Recertify	4-3

Contents

Where to Send a Kit for Recertification	4-3
5 Troubleshooting	
Troubleshooting Process	5-2
Returning a Kit or Device to Agilent	5-3
Where to Look for More Information	5-3
Contacting Agilent	5-4
6 Replaceable Parts	
Introduction	6-2
A Standard Definitions	
Version Changes	A-2
Standard Class Assignments	A-2
Blank Forms	A-6
Nominal Standard Definitions	A-9
Setting the System Impedance	A-9
Blank Forms	A-13

1 General Information

Adapter Set Overview

The Agilent 11904S adapter set is designed to give network analyzer systems with 2.4 mm test ports (such as the Agilent 8510, 8722, and the PNA series) the ability to perform measurements on devices with 2.92 mm connectors. The set can be used to achieve calibrated measurements of 2.92 mm devices up to 40 GHz, and 2.4 mm devices up to 50 GHz.

Adapter Set Contents

The basic 11904S adapter set includes the following items:

- user's and service guide
- four 2.4 mm to 2.92 mm adapters
- 5/16 in, 56 N-cm (5 in-lb) torque wrench for use on the 2.92 mm connectors
- an open-end wrench for the 7 mm flats on some of the components
- a calibration definitions disk (8510/8722) that contains modified standards to account for the adapters that are inserted after a 2.4 mm calibration is performed

NOTE A backup copy of the calibration definitions disk should be made immediately upon receipt of the adapter set. Refer to your network analyzer user's guide, or embedded help for instructions on duplicating a disk.

Refer to [Chapter 6](#), "Replaceable Parts," for a complete list of contents and their associated part numbers.

Calibration Definitions Disk

The calibration definitions disk contains two sets of calibration definitions for use with your analyzer. Refer to your network analyzer user's guide, or embedded help for information on modifying the calibration kit standard definitions.

8510

- The first set, **2.92 mm A.1**, contains modified standards data to account for the adapters which are inserted after a 2.4 mm calibration is performed.
- The second set, **2.4 mm A.4**, contains calibration definitions for only the 2.4 mm devices.

8722

- Has these same definitions stored within the internal non-volatile memory labeled as **2.92*** and **2.4 mm**.

Adapters (2.4 mm and 2.92 mm)

Like the other devices in the kit, the adapters are built to very tight tolerances to provide good broadband performance and to ensure stable, repeatable connections.

The adapters are designed so that their nominal electrical lengths are the same, which allows them to be used in calibration procedures for non-insertable devices (such as adapter removal).

The male 2.4 mm and 2.92 mm connectors are metrology grade. The female PSC-2.4 mm is a metrology-grade, precision slotless connector. The female 2.92 mm connectors have slotted contacts and therefore cannot be considered metrology grade. Due to the extremely thin wall of the 2.92 mm female connector, a slotless metrology grade 2.92 mm connector pair does not currently exist.

Compatible Network Analyzers

The 11904S adapter set is intended to be used with any of the following network analyzers.

- 8510 series
- 85106
- 8722
- PNA microwave series

Connector Adapter Sets Documented in This Manual

This manual applies to any 11904S adapter kit with serial number 2834A00101 or higher. The part numbers provided in this manual are the recommended replacement parts for this set. The devices in this set should meet the specifications published in this manual.

Equipment Required but Not Supplied

Some items are required or recommended for successful operation of your kit, but are not supplied with the kit. Refer to [Table 6-2 on page 6-4](#) for a list of these items and for ordering information.

Incoming Inspection

Refer to [Table 6-1 on page 6-2](#) to verify a complete shipment. Use [Table 1-1](#) to record the serial numbers of all serialized devices in your adapter set. To verify the electrical performance of the devices in this set, see Chapter 4, “Performance Verification.”

Check for damage. The foam-lined storage case provides protection during shipping. If the case or any device appears damaged, or if the shipment is incomplete, refer to [“Contacting Agilent” on page 5-4](#). Agilent will arrange for repair or replacement of incomplete or damaged shipments without waiting for a settlement from the transportation company. See [“Returning a Kit or Device to Agilent,” on page 5-3](#).

Recording the Device Serial Numbers

In addition to the set serial number, the devices in the kit are individually serialized (serial numbers are labeled onto the body of each device). Record these serial numbers in the following table. Recording the serial numbers will prevent confusing the devices in this kit with similar devices from other kits.

The adapters included in the kit are for measurement convenience only and are not serialized.

Table 1-1 Serial Number Record for the 11904S

Device	Serial Number
Adapter set	_____
Adapters:	
2.4 mm -m- to 2.92 mm -m-	_____
2.4 mm -m- to 2.92 mm -f-	_____
2.4 mm -f- to 2.92 mm -f-	_____
2.4 mm -f- to 2.92 mm -m-	_____

Clarifying the Sex of Connectors

In this document and in the prompts of the PNA calibration wizard, the sex of cable connectors and adapters is referred to in terms of the center conductor. For example, a connector or device designated as 1.85 mm -f- has a 1.85 mm female center conductor.

8510-series, 872x, and 875x ONLY: In contrast, during a measurement calibration, the network analyzer softkey menus label a 1.85 mm calibration device with reference to the sex of the analyzer's test port connector—not the calibration device connector. For example, the label SHORT (F) refers to the short that is to be connected to the female test port. This will be a male short from the calibration kit.

Table 1-2 Clarifying the Sex of Connectors: Examples

Terminology	Meaning
Short -f-	Female short (female center conductor)
Short (f)	Male short (male center conductor) to be connected to female port

A connector gage is referred to in terms of the connector that it measures. For instance, a male connector gage has a female connector on the gage so that it can measure male devices.

Preventive Maintenance

The best techniques for maintaining the integrity of the devices in the kit include:

- routine visual inspection
- routine cleaning
- proper gaging
- proper connection techniques

All of these are described in [Chapter 3](#). Failure to detect and remove dirt or metallic particles on a mating plane surface can degrade repeatability and accuracy and can damage any connector mated to it. Improper connections, resulting from pin depth values being out of the observed limits (see [Table 2-2 on page 2-4](#)) or from bad connection techniques, can also damage these devices.

2 Specifications

Environmental Requirements

Table 2-1 Environmental Requirements

Parameter	Limits
Temperature	
Operating ^a	+20 °C to +26 °C
Storage	-40 °C to +75 °C
Error-corrected range ^b	± 1 °C of measurement calibration temperature
Altitude	
Operating	< 4,500 meters (≈15,000 feet)
Storage	< 15,000 meters (≈50,000 feet)
Relative humidity	Always non-condensing
Operating	0 to 80% (26 °C maximum dry bulb)
Storage	0 to 90%

- a. The temperature range over which the calibration standards maintain conformance to their specifications.
- b. The allowable network analyzer ambient temperature drift during measurement calibration and during measurements when the network analyzer error correction is turned on. Also, the range over which the network analyzer maintains its specified performance while correction is turned on.

Temperature—What to Watch Out For

Changes in temperature can affect electrical characteristics. Therefore, the operating temperature is a critical factor in performance. During a measurement calibration, the temperature of the calibration devices must be stable and within the range shown in [Table 2-1](#).

IMPORTANT Avoid unnecessary handling of the devices during calibration because your fingers act as a heat source and may increase the temperature of the device.

Mechanical Characteristics

Mechanical characteristics such as center conductor protrusion and pin depth are *not* performance specifications. They are, however, important supplemental characteristics related to electrical performance. Agilent Technologies verifies the mechanical characteristics of the devices in the kit with special gaging processes and electrical testing. This ensures that the device connectors do not exhibit any center conductor protrusion or improper pin depth when the kit leaves the factory.

"[Gaging Connectors](#)," on page 3-12 explains how to use gages to determine if the kit devices have maintained their mechanical integrity. Refer to [Table 2-2](#) for *typical* and *observed* pin depth limits.

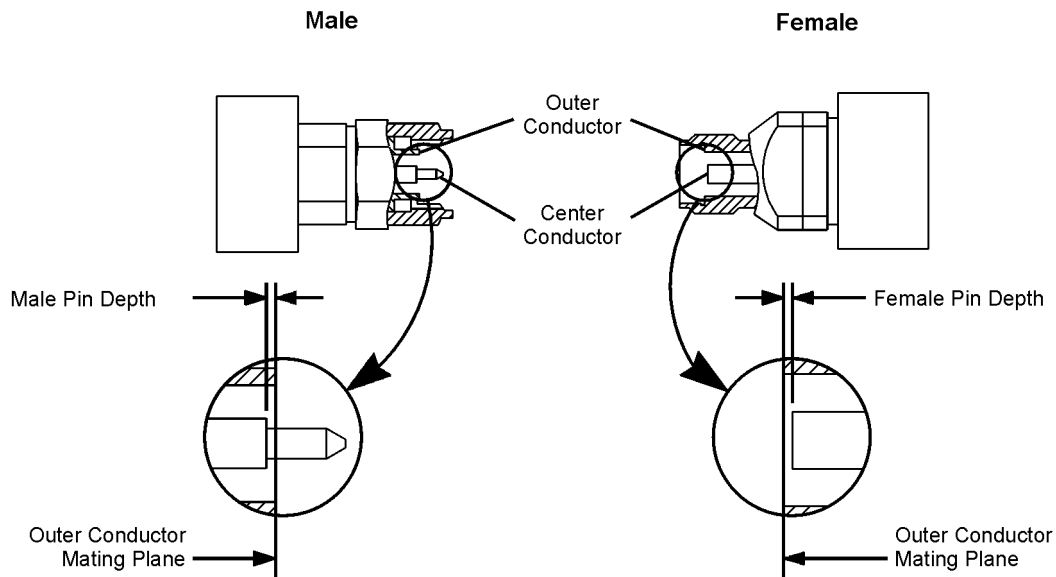
Pin Depth

Pin depth is the distance the center conductor mating plane differs from being flush with the outer conductor mating plane. See [Figure 2-1](#). The pin depth of a connector can be in one of two states: either protruding or recessed.

Protrusion is the condition in which the center conductor extends beyond the outer conductor mating plane. This condition will indicate a positive value on the connector gage.

Recession is the condition in which the center conductor is set back from the outer conductor mating plane. This condition will indicate a negative value on the connector gage.

Figure 2-1 Connector Pin Depth



ph51b

The pin depth value of each calibration device in the kit is not specified, but is an important mechanical parameter. The electrical performance of the device depends, to some extent, on its pin depth. The electrical specifications for each device in the kit take into account the effect of pin depth on the device's performance. [Table 2-2](#) lists the typical pin depths and measurement uncertainties, and provides observed pin depth limits for the devices in the kit. If the pin depth of a device does not measure within the *observed* pin depth limits, it may be an indication that the device fails to meet electrical specifications. Refer to [Figure 2-1](#) on the previous page for a visual representation of proper pin depth (slightly recessed).

Table 2-2 Pin Depth Limits

Device	Typical Pin Depth	Measurement Uncertainty ^a	Observed Pin Depth Limits ^b
Opens	0 to -0.0127 mm 0 to -0.00050 in	+0.0030 to -0.0030 mm +0.00012 to -0.00012 in	+0.0030 to -0.0157 mm +0.00012 to -0.00062 in
Shorts	0 to -0.0127 mm 0 to -0.00050 in	+0.0015 to -0.0015 mm +0.00006 to -0.00006 in	+0.0015 to -0.0142 mm +0.00006 to -0.00056 in
Fixed Loads	-0.0025 to -0.0203 mm -0.0001 to -0.00080 in	+0.0030 to -0.0030 mm +0.00012 to -0.00012 in	+0.00050 to -0.0234 mm +0.00002 to -0.00092 in
Adapters (2.4 to 2.4)	-0 to -0.0381 mm -0 to -0.00150 in	+0.0030 to -0.0030 mm +0.00012 to -0.00012 in	+0.0030 to -0.0411 mm +0.00012 to -0.00162 in
Adapter (2.4 to 2.92) ^c	0 to -0.0381 mm 0 to -0.00150 in	+0.0030 to -0.0030 mm +0.00012 to -0.00012 in	+0.0030 to -0.0411 mm +0.00012 to -0.00162 in
Sliding loads	0 to -0.0127 mm 0 to -0.00050 in	+0.0015 to -0.0015 mm +0.00006 to -0.00006 in	+0.0015 to -0.0142 mm +0.00006 to -0.00056 in

- a. Approximately +2 sigma to -2 sigma of gage uncertainty based on studies done at the factory according to recommended procedures.
- b. Observed pin depth limits are the range of observation limits seen on the gage reading due to measurement uncertainty. The depth could still be within specifications.
- c. 2.4 mm to 2.92 mm adapters require a 3.5 mm connector gage to measure the 2.92 mm end. Refer to [Table 6-1 on page 6-2](#) for associated part numbers.

When measuring pin depth, the measured value (resultant average of three or more measurements) is not the true value. Always compare the measured value with the observed pin depth limits in [Table 2-2](#) to evaluate the condition of device connectors.

Electrical Specifications

The electrical specifications in [Table 2-2](#) apply to the devices in your calibration kit when connected with an Agilent precision interface.

Table 2-3 Electrical Specifications

Device	Frequency	Parameter	Specification
Adapter	dc to 40 GHz	return loss	≤ 24 dB

Residual Errors after Calibration

The 8510 “Specifications and Performance Verification” software can be used to obtain a printout of the residual errors after a calibration has been performed. Refer to the “Specifications and Performance Verification” section of the 8510C On-Site Service Manual for information on how to use the software.

Certification

Agilent Technologies certifies that this product met its published specifications at the time of shipment from the factory. Agilent further certifies that its calibration measurements are traceable to the United States National Institute of Standards and Technology (NIST) to the extent allowed by the institute’s calibration facility, and to the calibration facilities of other International Standards Organization members. See "[How Agilent Verifies the Devices in Your Kit,](#)" on [page 4-2](#) for more information.

Specifications
Electrical Specifications

3 Use, Maintenance, and Care of the Devices

Electrostatic Discharge

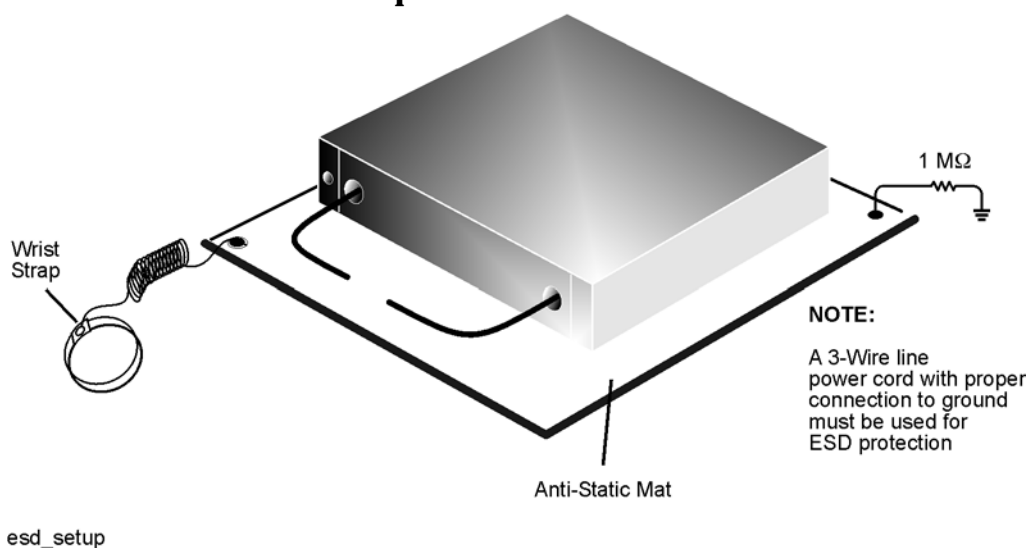
Protection against ESD (electrostatic discharge) is essential while connecting, inspecting, or cleaning connectors attached to a static-sensitive circuit (such as those found in test sets).

Static electricity can build up on your body and can easily damage sensitive internal circuit elements when discharged. Static discharges too small to be felt can cause permanent damage. Devices such as calibration components and devices under test (DUTs), can also carry an electrostatic charge. To prevent damage to the test set, components, and devices:

- *always* wear a grounded wrist strap having a 1 M Ω resistor in series with it when handling components and devices or when making connections to the test set.
- *always* use a grounded, conductive table mat while making connections.
- *always* wear a heel strap when working in an area with a conductive floor. If you are uncertain about the conductivity of your floor, wear a heel strap.
- *always* ground yourself before you clean, inspect, or make a connection to a static-sensitive device or test port. You can, for example, grasp the grounded outer shell of the test port or cable connector briefly.
- *always* ground the center conductor of a test cable before making a connection to the analyzer test port or other static-sensitive device. This can be done as follows:
 1. Connect a short (from your calibration kit) to one end of the cable to short the center conductor to the outer conductor.
 2. While wearing a grounded wrist strap, grasp the outer shell of the cable connector.
 3. Connect the other end of the cable to the test port.
 4. Remove the short from the cable.

Refer to [Chapter 6](#) for part numbers and instructions for ordering ESD protection devices.

Figure 3-1 ESD Protection Setup



Visual Inspection

Visual inspection and, if necessary, cleaning should be done every time a connection is made. Metal particles from the connector threads may fall into the connector when it is disconnected. One connection made with a dirty or damaged connector can damage both connectors beyond repair.

In some cases, magnification is necessary to see damage to a connector; a magnifying device with a magnification of $\geq 10x$ is recommended. However, not all defects that are visible only under magnification will affect the electrical performance of the connector. Use the following guidelines when evaluating the integrity of a connector.

Look for Obvious Defects and Damage First

Examine the connectors first for obvious defects and damage: badly worn plating on the connector interface, deformed threads, or bent, broken, or misaligned center conductors. Connector nuts should move smoothly and be free of burrs, loose metal particles, and rough spots.

What Causes Connector Wear?

Connector wear is caused by connecting and disconnecting the devices. The more use a connector gets, the faster it wears and degrades. The wear is greatly accelerated when connectors are not kept clean, or are not connected properly.

Connector wear eventually degrades performance of the device. Calibration devices should have a long life if their use is on the order of a few times per week. Replace devices with worn connectors.

The test port connectors on the network analyzer test set may have many connections each day, and are, therefore, more subject to wear. It is recommended that an adapter be used as a test port saver to minimize the wear on the test set's test port connectors.

Inspect the Mating Plane Surfaces

Flat contact between the connectors at all points on their mating plane surfaces is required for a good connection. See [Figure 2-1 on page 2-3](#). Look especially for deep scratches or dents, and for dirt and metal particles on the connector mating plane surfaces. Also look for signs of damage due to excessive or uneven wear or misalignment.

Light burnishing of the mating plane surfaces is normal, and is evident as light scratches or shallow circular marks distributed more or less uniformly over the mating plane surface. Other small defects and cosmetic imperfections are also normal. None of these affect electrical or mechanical performance.

If a connector shows deep scratches or dents, particles clinging to the mating plane surfaces, or uneven wear, clean and inspect it again. Devices with damaged connectors should be discarded. Determine the cause of damage before connecting a new, undamaged connector in the same configuration.

Slotted Connectors (2.92 mm)

When using slotted connectors, inspect the contact fingers in the female center conductor carefully. These can be bent or broken, and damage to them is not always easy to see. A connector with damaged contact fingers will not make good electrical contact and must be replaced.

NOTE This is particularly important when mating nonprecision to precision devices.

Precision Slotless Connectors (2.4 mm)

The female 2.4 mm connectors in this set are metrology-grade, precision slotless connectors (PSC). Precision slotless connectors are used to improve accuracy. A characteristic of metrology-grade connectors is directly traceability to national measurement standards through their well-defined mechanical dimensions. With PSCs on test ports and standards, the accuracy achieved when measuring at 50 dB return loss levels is comparable to using conventional slotted connectors measuring devices having only 30 dB return loss. This represents an accuracy improvement of about 10 times.

The female 2.92 mm connectors have slotted contacts and, therefore, cannot be considered metrology-grade. Due to the extremely thin wall of the 2.92 mm female connector, a slotless metrology-grade 2.92 mm connector pair does not currently exist.

Conventional female center conductors are slotted and, when mated, are flared by the male pin. Because physical dimensions determine connector impedance, this change in physical dimension affects electrical performance, making it very difficult to perform precision measurements with conventional slotted connectors.

The precision slotless connector was developed to eliminate this problem. The PSC has a center conductor with a solid cylindrical shell, the outside diameter of which does not change when mated. Instead, the center conductor has an internal contact that flexes to accept the male pin.

Calibration Information

The calibration procedure for using the Agilent 11904S adapters requires that a 2.4 mm calibration be done using the calibration definitions disk included in this adapter set *instead* of the data disk provided in the Agilent 85056A 2.4 mm calibration kit. Although response, 1-Port, and 1-Path 2-Port calibrations may also be done, the following section is a general overview of a full 2-Port calibration, as it is the most complex of the calibrations.

When performing a response calibration, leave the adapters connected and do *not* load the calibration definitions disk included in this 11904S adapter set.

Refer to your network analyzer documentation or embedded help for step-by-step calibration procedures and system uncertainty information.

Full 2-Port Calibration Overview

The method used to achieve calibrated 2.92 mm connector measurements involves calibrating both 2.4 mm test ports using 2.4 mm calibration standards: opens, shorts, and loads. For Option 001 Kits, both the low band load and sliding load are used. The test ports need not be insertable. Then, two 2.4 mm to 2.92 mm adapters are connected back-to-back between the test ports to provide the “thru” measurements. For example, if the test port connectors are both female 2.4 mm connectors, a 2.4 mm male to 2.92 mm male adapter mated with a 2.92 mm female to 2.4 mm male adapter can be used as the “thru”. This method provides a better transmission calibration than using the 2.4 mm ports as the thru.

The key to this calibration method lies in the fact that the calibration definitions disk contains modified standard definitions. The nominal 2.4 mm open and short circuit standard definitions are modified to account for the presence of the 2.4 mm to 2.92 mm adapters after calibration. The measurements of the 2.4 mm standard are effectively translated to the ends of the adapters so that the directivity, source match, and reflection tracking error terms are transformed to the ends of the adapters. The thru measurements made with the 2.4 mm to 2.92 mm adapter pair accounts for the length and loss of the adapters that are inserted after the 2.4 mm calibration. The load match and transmission tracking error terms are directly characterized at the 2.92 mm mating plane.

This calibration method assumes that the adapters being used have equal length and loss, and that they are reflectionless. The metrology-grade adapters (2.4 mm to 2.4 mm only) and the 2.4 mm to 2.92 mm adapter are designed and manufactured with very tight tolerances and therefore exhibit very similar transmission characteristics. They may be interchanged, to measure non-insertables, without much degradation in performance.

The actual return loss of the adapters has the most impact on the effective directivity, source match, and load match of the system. The 2.4 mm calibration residual errors are degraded proportionally by the return loss of the adapters. It is approximately equal to the RSS (adapter reflection coefficient, 2.4 mm calibration residual errors). The reflection tracking degradation is a function of the difference between the assumed loss and delay characteristics of the 2.4 mm/2.92 mm adapters and the actual transmission characteristics of the adapters.

For best 2.92 mm measurement accuracy, a precision 2.92 mm calibration kit, such as the Agilent N4692A Electronic Calibration Module or the Maury Microwave 8770S mechanical

calibration kit, is recommended.

Two Port Calibration Procedures

Note: The following procedures are applicable using the specified calibration kit definition files. If the VNA has an earlier version of the calibration kit definition file, obtain a copy of the latest file from Agilent Technologies, Inc.

Figure 3-2 Full 2-Port Calibration - Agilent 8510 VNA using calibration kit definition CK_292MMA2 and lower

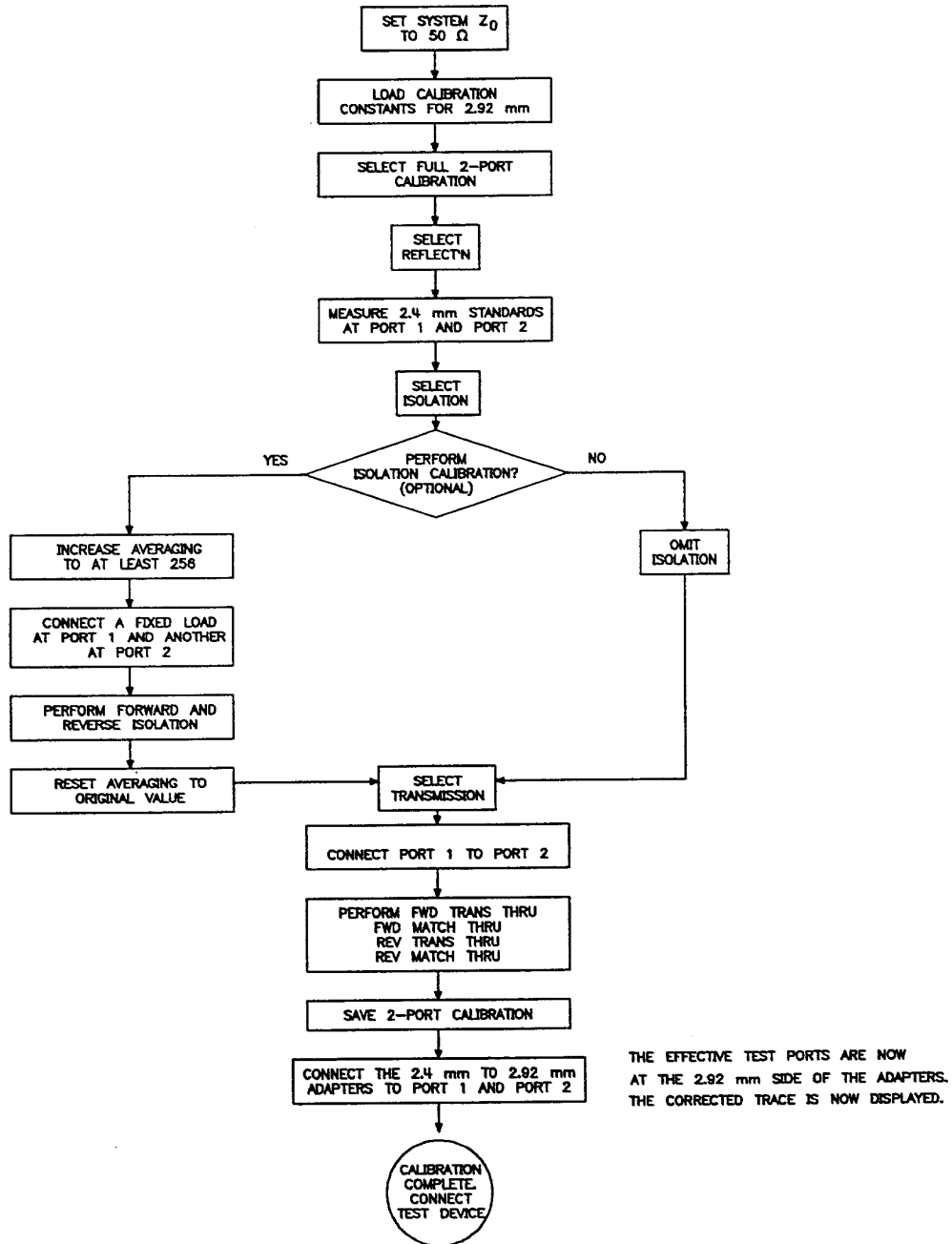
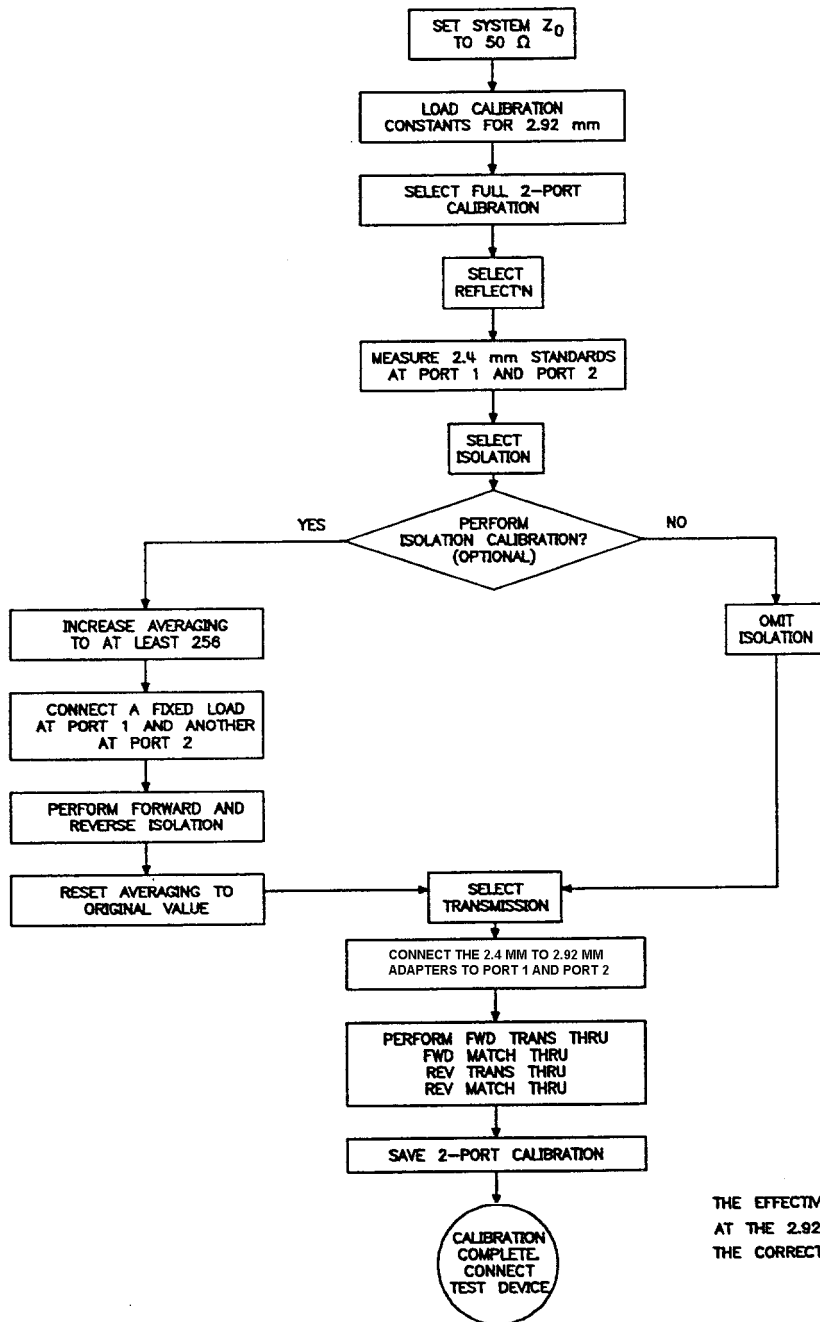


Figure 3-3 Full 2-Port Calibration - Agilent 8510 VNA using calibration kit definition CK_292MMA3 and higher



THE EFFECTIVE TEST PORTS ARE NOW AT THE 2.92 mm SIDE OF THE ADAPTERS. THE CORRECTED TRACE IS NOW DISPLAYED.

The Agilent PNA series of network analyzers provides two calibration procedures for mechanical calibration kits: the “Smart” Cal and the “Unguided” Cal. The “Smart” Cal guides you through the calibration process by providing step by step instructions. It also has many powerful built-in calibration features that can simplify the steps required to calibrate the PNA. Because the 85056K 2.4 mm/2.92 mm Calibration Kit operates differently from a standard calibration kit, the following, procedure is recommended:

PNA Smart Cal Calibration Procedure for the 85065K and 85056K01 Cal Kits

- 1) From the CALIBRATION menu, click CALIBRATION WIZARD
- 2) Select SMART CAL, click Next
- 3) At SELECT DUT CONNECTORS dialog, choose device connector type and sex. Always choose an insertable combination, such as 2.92 mm female on port-1 and 2.92 mm male on port-2.

Note: If the 2.92 mm connector selection is not available, click Cancel to exit Calibration Wizard. Click ADVANCED MODIFY CAL KIT, click IMPORT, then select the cal kit files from the Cal Kit data disk. Return to the Calibration Wizard.

- 4) At SELECT CAL KITS dialog, select either 85056K Broadband Load Cal Kit or 85056K01 Sliding load Cal Kit for both ports.
- 5) Click Next to perform the calibration steps. DO NOT connect the 2.4 mm to 2.92 mm adapters to the 2.4 mm test ports until instructed to do so. The 2.4 mm test ports are calibrated first. When instructed to connect the 2.4 mm/2.92 mm adapter pair (thru standards) to the test ports, connect the appropriate adapters back-to-back to the 2.4 mm test ports.
- 6) If the 2.92 mm device being tested is non-insertable, swap out one of the 2.4 mm to 2.92 mm adapter with one that will mate with the test device.

PNA Unguided Cal Calibration Procedure for the 85065K and 85056K01 Cal Kits

- 1) Ensure System ZO it is set to 50 ohms. Click SYSTEM then CONFIGURE, then SYSTEM ZO.
- 2) From the CALIBRATION menu, click CALIBRATION WIZARD
- 3) Select UNGUIDED CAL
- 4) Select FULL SOLT 2-PORT and check VIEW OR SELECT CAL KIT
- 5) Select 85056K Broadband Load Cal Kit or 85056K01 Sliding load Cal Kit.

Note: If the 2.92 mm cal kit is not available, then click Cancel to exit the calibration wizard. Click ADVANCED MODIFY CAL KIT, click IMPORT, then select the cal kit files from the Cal Kit data disk. Return to the Calibration Wizard

Note: The PNA refers to the connector sex of the calibration standard, NOT the test port.

- 6) When measuring the THRU standard, connect the 2.4 mm/2.92 mm adapter pair (thru standards) to the test ports.
- 7) If the 2.92 mm device being tested is a non-insertable, swap out one of the 2.4 mm to 2.92 mm adapters with one that will mate with the test device.

Cleaning Connectors

1. Use Compressed Air or Nitrogen

WARNING Always use protective eyewear when using compressed air or nitrogen.

Use compressed air (or nitrogen) to loosen particles on the connector mating plane surfaces. Clean air cannot damage a connector or leave particles or residues behind.

You can use any source of clean, dry, low-pressure compressed air or nitrogen that has an effective oil-vapor filter and liquid condensation trap placed just before the outlet hose.

Ground the hose nozzle to prevent electrostatic discharge, and set the air pressure to less than 414 kPa (60 psi) to control the velocity of the air stream. High-velocity streams of compressed air can cause electrostatic effects when directed into a connector. These electrostatic effects can damage the device. Refer to [“Electrostatic Discharge” on page 3-2](#) in this chapter for additional information.

2. Clean the Connector Threads

WARNING Keep isopropyl alcohol away from heat, sparks, and flame. Store in a tightly closed container. It is extremely flammable. In case of fire, use alcohol foam, dry chemical, or carbon dioxide; water may be ineffective.

Use isopropyl alcohol with adequate ventilation and avoid contact with eyes, skin, and clothing. It causes skin irritation, may cause eye damage, and is harmful if swallowed or inhaled. It may be harmful if absorbed through the skin. Wash thoroughly after handling.

In case of spill, soak up with sand or earth. Flush spill area with water.

Dispose of isopropyl alcohol in accordance with all applicable federal, state, and local environmental regulations.

Use a lint-free swab or cleaning cloth moistened with isopropyl alcohol to remove any dirt or stubborn contaminants on a connector that cannot be removed with compressed air or nitrogen. Refer to [Table 6-2 on page 6-4](#) for part numbers for isopropyl alcohol and cleaning swabs.

- a. Apply a small amount of isopropyl alcohol to a lint-free cleaning swab.
- b. Clean the connector threads.
- c. Let the alcohol evaporate, then blow the threads dry with a gentle stream of clean, low-pressure compressed air or nitrogen. Always completely dry a connector before you reassemble or use it.

3. Clean the Mating Plane Surfaces

- a. Apply a small amount of isopropyl alcohol to a lint-free cleaning swab.
- b. Clean the center and outer conductor mating plane surfaces. Refer to [Figure 2-1 on page 2-3](#). When cleaning a female connector, avoid snagging the swab on the center conductor contact fingers by using short strokes.
- c. Let the alcohol evaporate, then blow the connector dry with a gentle stream of clean, low-pressure compressed air or nitrogen. Always completely dry a connector before you reassemble or use it.

4. Inspect

Inspect the connector to make sure that no particles or residue remain. Refer to [“Visual Inspection” on page 3-3](#).

Gaging Connectors

The gages available from Agilent Technologies are intended for preventive maintenance and troubleshooting purposes only. They are effective in detecting *excessive* center conductor protrusion or recession and conductor damage on DUTs, test accessories, and the calibration kit devices. They are especially useful in determining if the pin depths of sliding loads are grossly out of adjustment. Do *not* use the gages for precise pin depth measurements. See [Table 6-2 on page 6-4](#) for part number information.

Connector Gage Accuracy

The connector gages are only capable of performing coarse measurements. They do not provide the degree of accuracy necessary to precisely measure the pin depth of the kit devices. This is partially due to the repeatability uncertainties that are associated with the measurement. Only the factory—through special gaging processes and electrical testing—can accurately verify the mechanical characteristics of the devices.

With proper technique, the gages are useful in detecting gross pin depth errors on device connectors. To achieve maximum accuracy, random errors must be reduced by taking the average of at least three measurements having different gage orientations on the connector. Even then, the resultant average can be in error by as much as ± 0.0001 inch due to systematic (biasing) errors usually resulting from worn gages and gage masters. The information in [Table 2-2 on page 2-4](#) assumes new gages and gage masters, therefore, these systematic errors were not included in the uncertainty analysis. As the gages undergo more use, the systematic errors can become more significant in the accuracy of the measurement.

The measurement uncertainties are primarily a function of the assembly materials and design, and the unique interaction each device type has with the gage. Therefore, these uncertainties can vary among the different devices. For example, note the difference between the uncertainties of the Open and Short in [Table 2-2 on page 2-4](#).

The *observed* pin depth limits add these uncertainties to the *typical* factory pin depth values to provide practical limits that can be referenced when using the gages.

NOTE When measuring pin depth, the measured value (resultant average of three or more measurements) contains measurement uncertainty and is not necessarily the true value. Always compare the measured value with the *observed* pin depth limits (which account for measurement uncertainties) in [Table 2-2 on page 2-4](#) to evaluate the condition of device connectors.

When to Gage Connectors

Gage a connector at the following times:

- Prior to using a device for the first time, record the pin depth measurement so that it can be compared with future readings. (It will serve as a good troubleshooting tool when you suspect damage may have occurred to the device.)
- If either visual inspection or electrical performance suggests that the connector interface may be out of typical range (due to wear or damage, for example).
- If a calibration device is used by someone else or on another system or piece of equipment.
- Initially, after every 100 connections, and after that, as often as experience indicates.

Gaging Procedures

Gaging 2.4 mm and 2.92 mm Connectors

CAUTION *Never connect a 2.4 mm gage to a 2.92 mm device. You must use 3.5 mm gages to measure the pin depth of 2.92 mm devices.*

NOTE Always hold a connector gage by the gage barrel, below the dial indicator. This gives the best stability, and improves measurement accuracy. (Cradling the gage in your hand, or holding it by the dial applies stress to the gage plunger mechanism through the dial indicator housing.)

1. Select the proper gage for your connector. The 2.92 mm connectors are gaged with the same gages and in the same way as the precision 3.5 mm connectors. These are *not* the same gages that are used for the 2.4 mm connectors. Refer to [Table 6-2 on page 6-4](#) for gage set part numbers.
2. Inspect and clean the gage, gage master, and device to be gaged. Refer to “[Visual Inspection](#)” and “[Cleaning Connectors](#)” earlier in this chapter.
3. Zero the connector gage (refer to [Figure 3-4](#)):
 - a. While holding the gage by the barrel, and without turning the gage or the device, connect the gage to the gage master by interconnecting the male and female connectors. Connect the nut finger-tight. Do *not* overtighten.

NOTE Refer to Table 3-1, “Torque Wrench Information,” on page 17 for connector type and torque setting information.

- b. Using an open-end wrench to keep the device body from rotating, use the torque wrench, included in the kit, to tighten the connecting nut to the specified torque. Refer to “[Final Connection Using a Torque Wrench](#)” on page 3-17 for additional information.
 - c. As you watch the gage pointer, gently tap the barrel of the gage to settle the reading. The gage pointer should line up exactly with the zero mark on the gage. If not, adjust the zero set knob until the gage pointer lines up exactly with the zero mark.
 - d. Remove the gage master.
4. Gage the device connector (refer to [Figure 3-4](#)):
- a. While holding the gage by the barrel, and without turning the gage or the device, connect the gage to the device by interconnecting the male and female connectors. Connect the nut finger-tight. Do *not* overtighten.
 - b. Using an open-end wrench to keep the device body from rotating, use the torque wrench, included in the kit, to tighten the connecting nut to the specified torque. Refer to “[Final Connection Using a Torque Wrench](#)” on page 3-17 for additional information.
 - c. Gently tap the barrel of the gage with your finger to settle the gage reading.
 - d. Read the gage indicator dial. Read *only* the black \pm signs; *not* the red \pm signs.

For maximum accuracy, measure the connector a minimum of three times and take an average of the readings. After each measurement, rotate the gage a quarter-turn to reduce measurement variations that result from the gage or the connector face not being exactly perpendicular to the center axis.
 - e. Compare the average reading with the *observed* pin depth limits in [Table 2-2](#) on page 2-4.

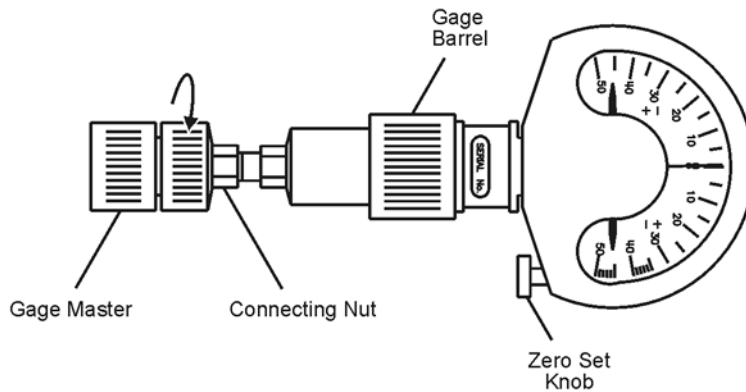
Figure 3-4 Gaging 2.4 mm and 2.92 mm Connectors

Note:

Although male devices are shown in this illustration, the procedure is essentially the same for female devices.

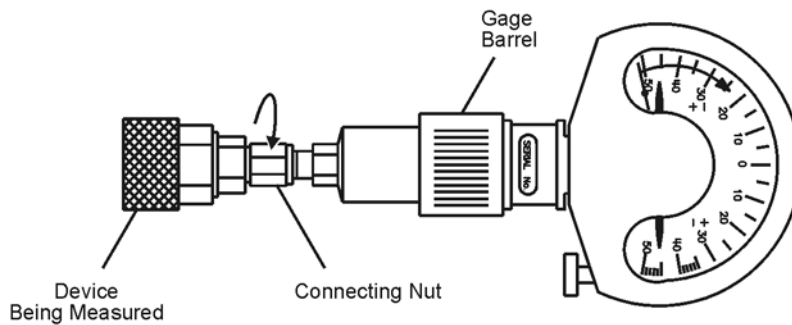
Zero the Connector Gage

- Connect the gage to the gage master.
- Torque the connecting nut.
- Gently tap the gage barrel to settle the reading.
- Using the zero set knob, adjust the gage pointer to line up exactly with the zero mark.
- Remove the gage master.



Gage the Device Connector

- Connect the gage to the device being measured.
- Torque the connecting nut.
- Gently tap the gage barrel to settle the reading.
- Read recession or protrusion from the gage.
- Remove the device.
- Repeat two additional times and average the three readings.



ph71a

Connections

Good connections require a skilled operator. *The most common cause of measurement error is bad connections.* The following procedures illustrate how to make good connections.

How to Make a Connection

Preliminary Connection

1. Ground yourself and all devices. Wear a grounded wrist strap and work on a grounded, conductive table mat. For ESD precautions refer to [“Electrostatic Discharge” on page 3-2.](#)
2. Visually inspect the connectors. Refer to [“Visual Inspection” on page 3-3.](#)
3. If necessary, clean the connectors. Refer to [“Cleaning Connectors” on page 3-10.](#)
4. Use a connector gage to verify that all center conductors are within the *observed* pin depth values in [Table 2-2 on page 2-4.](#)
5. Carefully align the connectors. The male connector center pin must slip concentrically into the contact finger of the female connector.

CAUTION Do *not* turn the device body. Only turn the connector nut. Damage to the center conductor can occur if the device body is twisted.

6. Push the connectors straight together and tighten the connector nut finger tight. As the center conductors mate, there is usually slight resistance.
7. The preliminary connection is tight enough when the mating plane surfaces make uniform, light contact. Do not overtighten this connection.

A connection in which the outer conductors make gentle contact at all points on both mating surfaces is sufficient. Very light finger pressure is enough to accomplish this.

8. Make sure the connectors are properly supported. Relieve any side pressure on the connection from long or heavy devices or cables.

Final Connection Using a Torque Wrench

Use the appropriate torque wrench to make the final connection. [Table 3-1](#) provides information about the torque wrench required for the connector types found in this set. Refer to [Table 6-1 on page 6-2](#) for replacement part numbers and ordering information.

Table 3-1 Torque Wrench Information

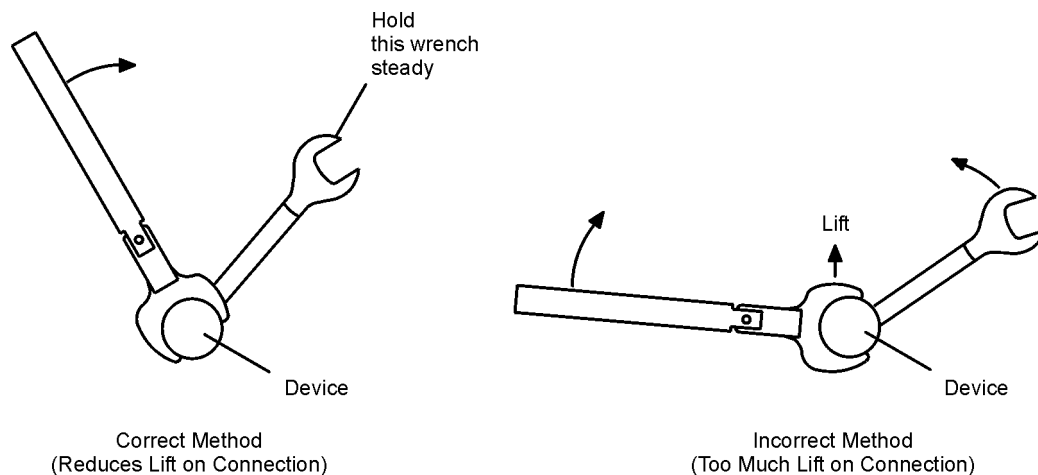
Connector Type	Torque Setting	Torque Tolerance
2.92 mm	56 N-cm (5 in-lb)	±5.6 N-cm (±0.5 in-lb)
2.4 mm	90 N-cm (8 in-lb)	±9.0 N-cm (±0.8 in-lb)

Using a torque wrench guarantees that the connection is not too tight, preventing possible connector damage. It also guarantees that all connections are equally tight each time.

Prevent the rotation of anything other than the connector nut that you are tightening. It may be possible to do this by hand if one of the connectors is fixed (as on a test port). However, it is recommended that you use an open-end wrench to keep the body of the device from turning.

1. Position both wrenches within 90 degrees of each other before applying force. See [Figure 3-5](#). Wrenches opposing each other (greater than 90 degrees apart) will cause a lifting action which can misalign and stress the connections of the devices involved. This is especially true when several devices are connected together.

Figure 3-5 Wrench Positions

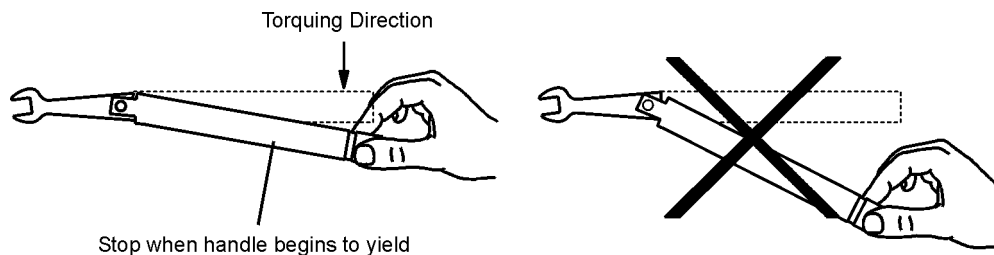


ph711a

Connections

2. Hold the torque wrench lightly, at the end of the handle only (beyond the groove), as shown in [Figure 3-6](#).

Figure 3-6 Using the Torque Wrench



ph712a

3. Apply downward force perpendicular to the wrench handle. This applies torque to the connection *through* the wrench.

Do not hold the wrench so tightly that you push the handle straight down along its length rather than pivoting it; otherwise, you apply an unknown amount of torque.

4. Tighten the connection just to the torque wrench “break” point. The wrench handle gives way at its internal pivot point. Do not tighten the connection further. See [Figure 3-6](#).

CAUTION You don't have to fully break the handle of the torque wrench to reach the specified torque; doing so can cause the handle to kick back and loosen the connection. Any give at all in the handle is sufficient torque.

How to Separate a Connection

To avoid lateral (bending) force on the connector mating plane surfaces, always support the devices and connections.

CAUTION Do *not* turn the device body. Only turn the connector nut. Damage to the center conductor can occur if the device body is twisted.

1. Use an open-end wrench to prevent the device body from turning.
2. Use another open-end wrench to loosen the connecting nut.
3. Complete the separation by hand, turning only the connecting nut.
4. Pull the connectors straight apart without twisting, rocking, or bending either of the connectors.

Operational Check

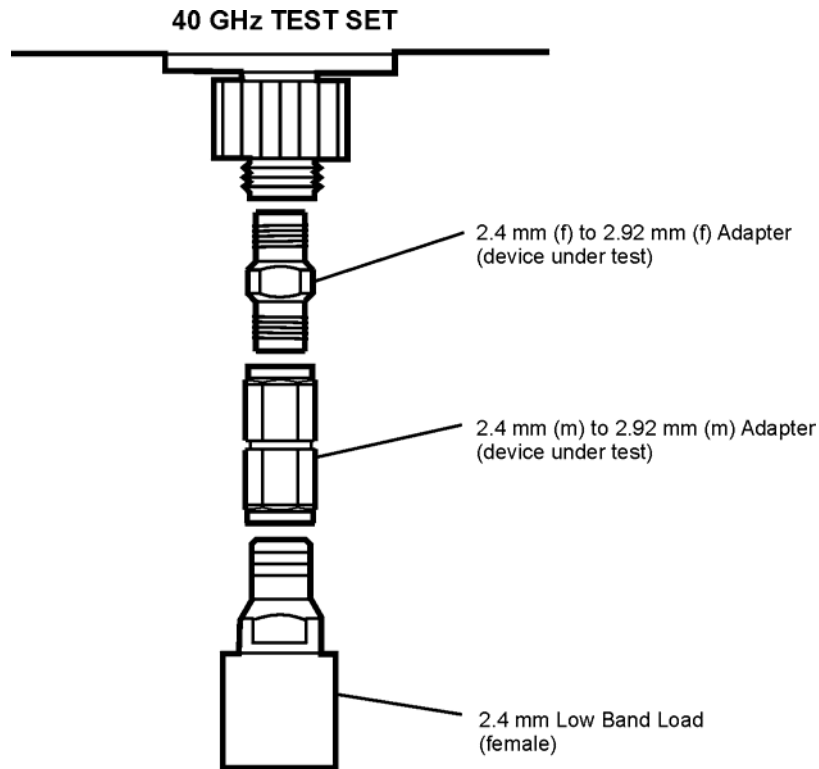
The following procedure will give an indication of whether or not the adapters in this set are operating properly. This procedure does *not* verify any specification, but rather gives an indication of the return loss characteristics of the adapters. Any gross errors obtained after performing this check could indicate that the performance of one or both of the adapters checked is in question (two are checked at the same time).

Connect the 2.4 mm Lowband Load

Refer to [Figure 3-7](#) for the following steps:

1. Perform an S_{11} 1-Port calibration in 2.4 mm to 40 GHz using the calibration definitions disk included in the 85056A 2.4 mm calibration kit. The calibration conditions are:
 - 250 ms sweep
 - 201 points
 - 16 averages
 - 2.4 mm sliding load cal

Figure 3-7 2.4 mm to 2.92 mm Adapter to Lowband Load



zz4401a

2. Connect the 2.4 mm -f- to 2.92 mm -f- adapter to the calibrated test port.
3. Connect the 2.4 mm -m- to 2.92 mm -m- adapter to the adapter on the test port.
4. Connect the 2.4 mm lowband load -f- to the end of the adapter connected in step 3. The measured return loss should be > 28 dB from 45 MHz to 4 GHz.

Refer to [Figure 3-8](#) for the following step:

5. Remove the lowband load and connect a 2.4 mm sliding load -f- to the adapter. Refer to the *85056A 2.4 mm Precision Calibration Kit* for information on connecting a sliding load. The return loss should be > 20 dB from 4 GHz to 40 GHz.

Figure 3-8 2.4 mm to 2.92 mm Adapter to Sliding Load

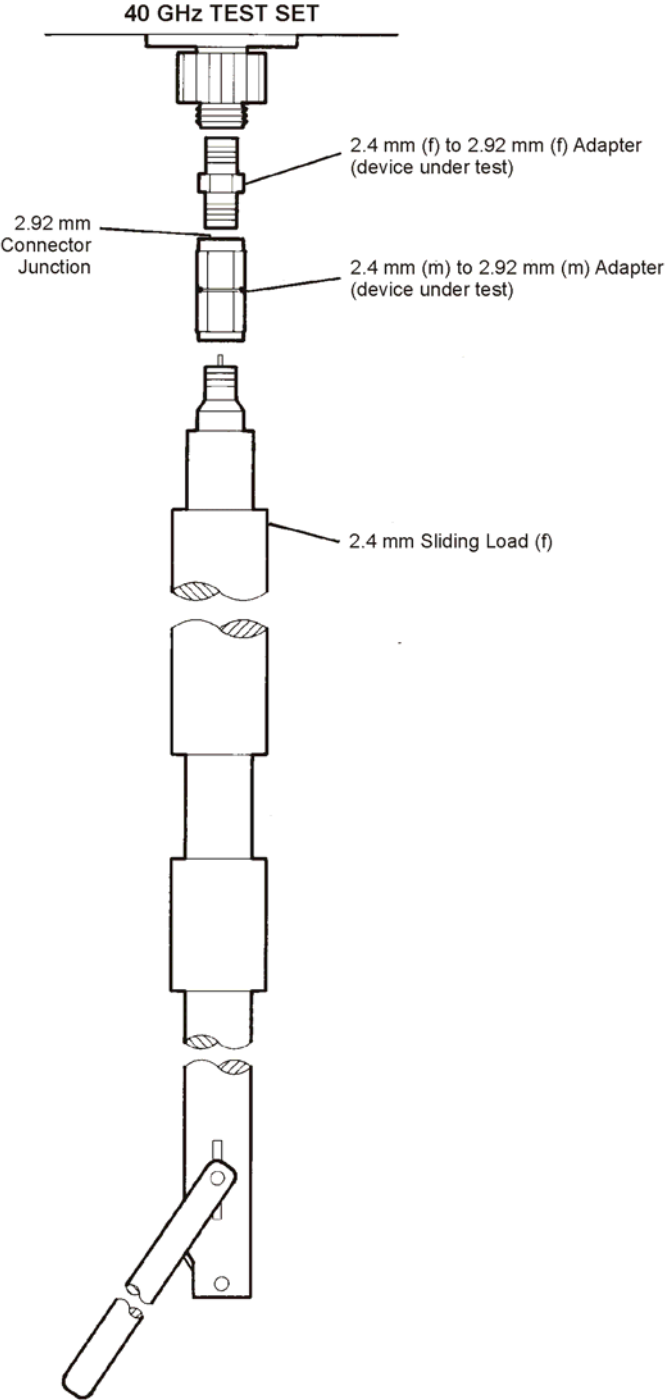


fig8t

Handling and Storage

- Install the protective end caps and store the calibration devices in the foam-lined storage case when not in use.
- Never store connectors loose in a box, or in a desk or bench drawer. This is the most common cause of connector damage during storage.
- Keep connectors clean.
- Do not touch mating plane surfaces. Natural skin oils and microscopic particles of dirt are easily transferred to a connector interface and are very difficult to remove.
- Do not set connectors contact-end down on a hard surface. The plating and the mating plane surfaces can be damaged if the interface comes in contact with any hard surface.

4 Performance Verification

Introduction

The performance of your adapter set can only be verified by returning the kit to Agilent Technologies for recertification. The equipment and calibration standards required to verify the specifications of the devices in the kit have been specially manufactured and are not commercially available.

To confirm that your Agilent 85056A or 85056D Calibration Kit is performing accurate calibrations, use the Agilent 85057A Verification Kit with the “Specifications and Performance Verification” disk. For ordering information refer to Chapter 6 , “Replaceable Parts.”

How Agilent Verifies the Devices in Your Kit

Agilent verifies the specifications of these devices as follows:

1. The residual microwave error terms of the test system are verified with precision airlines and shorts that are directly traced to the National Institute of Standards and Technology (NIST). The airline and short characteristics are developed from mechanical measurements. The mechanical measurements and material properties are carefully modeled to give very accurate electrical representation. The mechanical measurements are then traced to NIST through various plug and ring gages and other mechanical measurements.
2. Each calibration device is electrically tested on this system. For the initial (before sale) testing of the calibration devices, Agilent includes the test measurement uncertainty as a guardband to guarantee each device meets the published specification. For recertifications (after sale), no guardband is used and the measured data is compared directly with the specification to determine the pass or fail status. The measurement uncertainty for each device is, however, recorded in the calibration report that accompanies recertified kits.

These two steps establish a traceable link to NIST for Agilent to the extent allowed by the institute’s calibration facility. The specifications data provided for the devices in the kit is traceable to NIST through Agilent Technologies.

Recertification

The following will be provided with a recertified kit:

- a new calibration sticker affixed to the case
- a certificate of calibration
- a calibration report for each device in the kit listing measured values, specifications, and uncertainties

NOTE A list of NIST traceable numbers may be purchased upon request to be included in the calibration report.

Agilent Technologies offers a *Standard* calibration for the recertification of the kit. For more information, contact Agilent Technologies. Refer to [“Contacting Agilent” on page 5-4](#) for a list of contacts.

How Often to Recertify

The suggested initial interval for recertification is 12 months or sooner. The actual need for recertification depends on the use of the kit. After reviewing the results of the initial recertification, you may establish a different recertification interval that reflects the usage and wear of the kit.

NOTE The recertification interval should begin on the date the kit is *first used* after the recertification date.

Where to Send a Kit for Recertification

Contact Agilent Technologies for information on where to send your kit for recertification. Contact information is listed on page 4. Refer to ["Returning a Kit or Device to Agilent," on page 5-3](#) for details on sending your kit.

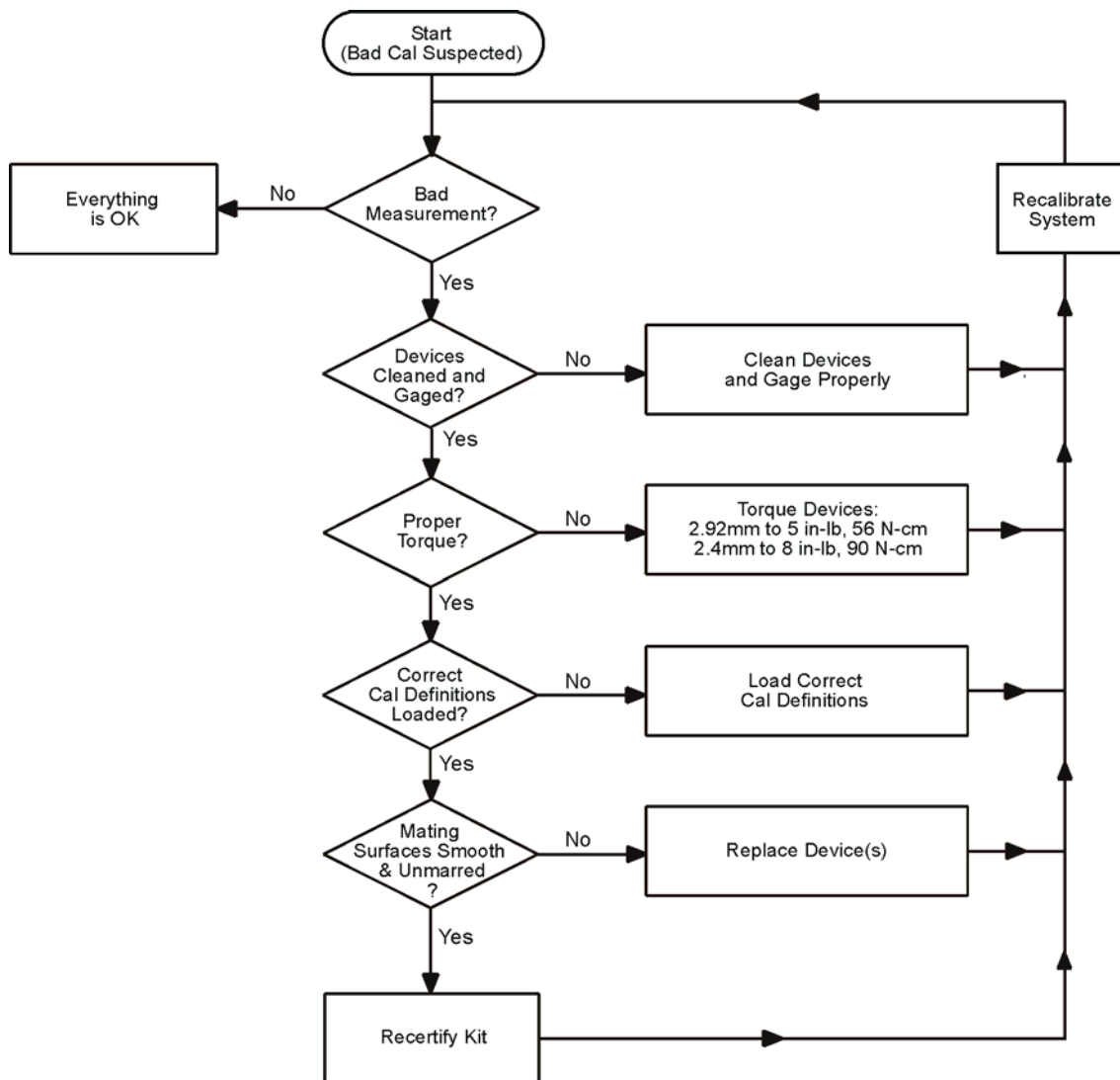
5 Troubleshooting

Troubleshooting Process

This manual contains limited information about network analyzer system operation. For complete information, refer to the instrument documentation.

If you suspect a bad calibration, or if your network analyzer does not pass performance verification, follow the steps in [Figure 5-1](#).

Figure 5-1 Troubleshooting Flowchart



wh701d

Returning a Kit or Device to Agilent

If your kit or device requires service, contact Agilent Technologies for information on where to send it. See page 4 for contact information. Include a service tag (located near the end of this manual) on which you provide the following information:

- your company name and address
- a technical contact person within your company, and the person's complete telephone number
- the model number and serial number of the kit
- the part number and serial number of each device
- the type of service required
- a *detailed* description of the problem and how the device was being used when the problem occurred (such as calibration or measurement)

Where to Look for More Information

This manual contains limited information about network analyzer system operation. For complete information, refer to the instrument documentation. If you need additional information, contact Agilent Technologies.

Contacting Agilent

This information supersedes all prior HP contact information.			
Online assistance: www.agilent.com/find/assist			
Americas			
Brazil (tel) (+55) 11 3351 7012 (fax) (+55) 11 3351 7024	Canada (tel) 888 447 7378 (fax) 905 282 6495	Mexico (tel) 1 800 254 2440 (fax) 1 800 254 4222	United States (tel) 800 829 4444 (alt) (+1) 303 662 3998 (fax) 800 829 4433
Asia Pacific and Japan			
Australia (tel) 1 800 225 574 (fax) 1 800 681 776 (fax) 1 800 225 539	China (tel) 800 810 0508 (alt) 800 810 0510 (fax) 800 810 0507 (fax) 800 810 0362	Hong Kong (tel) 800 933 229 (fax) 800 900 701	India (tel) 1600 112 626 (fax) 1600 112 727 (fax) 1600 113 040
Japan (Bench) (tel) 0120 32 0119 (alt) (+81) 426 56 7799 (fax) 0120 01 2144	Japan (On-Site) (tel) 0120 802 363 (alt) (+81) 426 56 7498 (fax) (+81) 426 60 8953	Singapore (tel) 1 800 275 0880 (fax) (+65) 6755 1235 (fax) (+65) 6755 1214	South Korea (tel) 080 778 0011 (fax) 080 778 0013
Taiwan (tel) 0800 047 669 (fax) 0800 047 667 (fax) 886 3492 0779	Thailand (tel) 1 800 2758 5822 (alt) (+66) 2267 5913 (fax) 1 800 656 336	Malaysia (tel) 1800 880 399 (fax) 1800 801 054	
Europe			
Austria (tel) 0820 87 44 11* (fax) 0820 87 44 22	Belgium (tel) (+32) (0)2 404 9340 (alt) (+32) (0)2 404 9000 (fax) (+32) (0)2 404 9395	Denmark (tel) (+45) 7013 1515 (alt) (+45) 7013 7313 (fax) (+45) 7013 1555	Finland (tel) (+358) 10 855 2100 (fax) (+358) (0) 10 855 2923
France (tel) 0825 010 700* (alt) (+33) (0)1 6453 5623 (fax) 0825 010 701*	Germany (tel) 01805 24 6333* (alt) 01805 24 6330* (fax) 01805 24 6336*	Ireland (tel) (+353) (0)1 890 924 204 (alt) (+353) (0)1 890 924 206 (fax) (+353) (0)1 890 924 024	Israel (tel) (+972) 3 9288 500 (fax) (+972) 3 9288 501
Italy (tel) (+39) (0)2 9260 8484 (fax) (+39) (0)2 9544 1175	Luxemburg (tel) (+32) (0)2 404 9340 (alt) (+32) (0)2 404 9000 (fax) (+32) (0)2 404 9395	Netherlands (tel) (+31) (0)20 547 2111 (alt) (+31) (0)20 547 2000 (fax) (+31) (0)20 547 2190	Russia (tel) (+7) 095 797 3963 (alt) (+7) 095 797 3900 (fax) (+7) 095 797 3901
Spain (tel) (+34) 91 631 3300 (alt) (+34) 91 631 3000 (fax) (+34) 91 631 3301	Sweden (tel) 0200 88 22 55* (alt) (+46) (0)8 5064 8686 (fax) 020 120 2266*	Switzerland (French) (tel) 0800 80 5353 opt. 2* (alt) (+33) (0)1 6453 5623 (fax) (+41) (0)22 567 5313	Switzerland (German) (tel) 0800 80 5353 opt. 1* (alt) (+49) (0)7031 464 6333 (fax) (+41) (0)1 272 7373
Switzerland (Italian) (tel) 0800 80 5353 opt. 3* (alt) (+39) (0)2 9260 8484 (fax) (+41) (0)22 567 5314	United Kingdom (tel) (+44) (0)7004 666666 (alt) (+44) (0)7004 123123 (fax) (+44) (0)7004 444555		
(tel) = primary telephone number; (alt) = alternate telephone number; (fax) = FAX number; * = in country number			
			8/03/04

6 Replaceable Parts

Introduction

Table 6-1 lists the replacement part numbers for the 11904S adapter set. Table 6-2 lists the replacement part numbers for items *not* included in the calibration kit that are either required or recommended for successful operation of the kit.

To order a listed part, note the description, the part number, and the quantity desired. Telephone or send your order to Agilent Technologies. See "Contacting Agilent," on page 5-4 for contact information.

Table 6-1 Replaceable Parts for the 11904S Adapter Set

Description	Qty Per Set	Agilent Part Number
Adapters^a		
2.4 mm -m- to 2.92 mm -m-	1	11904-60001
2.4 mm -m- to 2.92 mm -f-	1	11904-60003
2.4 mm -f- to 2.92 mm -m-	1	11904-60004
2.4 mm -f- to 2.92 mm -f-	1	11904-60002
Wrench		
5/16 in, 56 N-cm (5 in-lb) torque	1	8710-1582
7 mm open-end wrench	1	8710-1761
Adapter Set Storage Case		
Storage case	1	11904-60005
Foam pad	1	5181-5544
Miscellaneous Items		
User's and service guide ^b	1	11904-90009
Connector care-quick reference card	1	08510-90360
Calibration definitions disk (8510 and 8722)	1	11904-10002

a. See "Clarifying the Sex of Connectors" on page 1-4.

b. See "Printing Copies of Documentation from the Web" on page iii.

Figure 6-1 Identification Sheet for the 11904S Adapter Set
ADAPTERS



2.4 mm (m) to 2.92 mm (m)



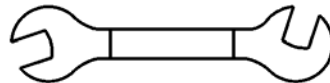
2.4 mm (m) to 2.92 mm (f)



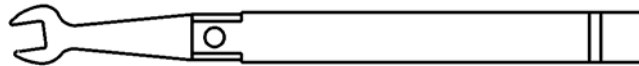
2.4 mm (f) to 2.92 mm (f)



2.4 mm (f) to 2.92 mm (m)



7 mm Open-End Wrench



5/16 Inch Torque Wrench
8 in-lb (90 N-cm)

NOT SHOWN:

- Calibration definitions disk
- Disk holder
- Documentaion
- Storage case

zz402a

Table 6-2 Items Not Included in the 11904S Adapter Set

Description	Qty Per Set	Agilent Part Number
ESD Protection Devices		
Grounding wrist strap	1	9300-1367
5 ft grounding cord for wrist strap	1	9300-0980
2 ft by 4 ft conductive table mat with 15 ft grounding wire	1	9300-0797
ESD heel strap	1	9300-1308
Connector Cleaning Supplies		
Isopropyl alcohol	30 ml	8500-5344
Foam-tipped cleaning swabs	100	9301-1243
Miscellaneous Items^a		
Specifications and performance verification disk ^b	1	08510-10033
Tube package	1	1540-0803
2.4 mm –f– pin-depth gage	1	11752-60107
2.4 mm –m– pin-depth gage	1	11752-60108
Centering bead (for gaging 2.4 mm sliding load)	1	85056-20001
3.5 mm –f– pin-depth gage (used for 2.92 mm)	1	11752-60105
3.5 mm –m– pin-depth gage (used for 2.92 mm)	1	11752-60106
Centering bead (for gaging 3.5 mm sliding load)	1	85052-60042

a. See [“Clarifying the Sex of Connectors” on page 1-4.](#)

b. See the 8510C *On-Site Service Manual* for instructions on using this disk.

A Standard Definitions

Version Changes

Class assignments and standard definitions may change as more accurate model and calibration methods are developed. The disk shipped with the kit will contain the most recent version.

Standard Class Assignments

Class assignment organizes calibration standards into a format compatible with the error models used in the measurement calibration. A class or group of classes corresponds to the systematic errors to be removed from the measured network analyzer response. [Table A-1](#) through [A-3](#) list the classes used by the following network analyzers. This information resides on the calibration definitions disk included in the kit.

Table A-1 Standard Class Assignments for the 8510 Network Analyzer

Disk File Name: CK_292mmA1									Calibration Label: 2.92 mm A.1								
Class	A	B	C	D	E	F	G	Standard Class Label	Class	A	B	C	D	E	F	G	Standard Class Label
S ₁₁ A	2							Open	S ₁₁ A	2							Open
S ₁₁ B	1							Short	S ₁₁ B	1							Short
S ₁₁ C	9	10	12					Loads	S ₁₁ C	9	10	12					Loads
S ₂₂ A	2							Open	S ₂₂ A	2							Open
S ₂₂ B	1							Short	S ₂₂ B	1							Short
S ₂₂ C	9	10	12					Loads	S ₂₂ C	9	10	12					Loads
Forward transmission	11							Thru	Forward transmission	11							Thru
Reverse transmission	11							Thru	Reverse transmission	11							Thru
Forward match	11							Thru	Forward match	11							Thru
Reverse match	11							Thru	Reverse match	11							Thru
Forward isolation ^a	9							Isolation standard	Forward isolation ^a	9							Isolation standard
Reverse isolation	9							Isolation standard	Reverse isolation	9							Isolation standard
Frequency response	1	2	11					Response	Frequency response	1	2	11					Response
TRL thru	1							Undefined	TRL thru	14							Undefined
TRL reflect	1							Undefined	TRL reflect	1							Undefined
TRL line	1							Undefined	TRL line	15							Undefined
Adapter	1	5	6	7	8			Adapter	Adapter	13	5	6	7	8			Adapter
TRL Option									TRL Option								
Cal Z ₀ : ___ System Z ₀ ___ X Line Z ₀									Cal Z ₀ : ___ System Z ₀ ___ X Line Z ₀								
Set ref: ___ X Thru ___ Reflect									Set ref: ___ X Thru ___ Reflect								
Lowband frequency: _____									Lowband frequency: _____								

a. The forward isolation standard is also used for the isolation part of a response and isolation calibration.

Table A-2 Standard Class Assignments for the 8722 Network Analyzer

Calibration Label:[2.92*]									Calibration Label:[2.4 mm]								
Class	A	B	C	D	E	F	G	Standard Class Label	Class	A	B	C	D	E	F	G	Standard Class Label
S ₁₁ A	2							Open	S ₁₁ A	2							Open
S ₁₁ B	1							Short	S ₁₁ B	1							Short
S ₁₁ C	3	5	6					Loads	S ₁₁ C	3	5	6					Loads
S ₂₂ A	2							Open	S ₂₂ A	2							Open
S ₂₂ B	1							Short	S ₂₂ B	1							Short
S ₂₂ C	3	5	6					Loads	S ₂₂ C	3	5	6					Loads
Forward transmission	4							Thru	Forward transmission	4							Thru
Reverse transmission	4							Thru	Reverse transmission	4							Thru
Forward match	4							Thru	Forward match	4							Thru
Reverse match	4							Thru	Reverse match	4							Thru
Response	1	2	4					Response	Response	1	2	4					Response
Response & isolation	1	2	4					Response	Response & isolation	1	2	4					Response
TRL thru	4							Undefined	TRL thru	4							Undefined
TRL reflect	2							Undefined	TRL reflect	2							Undefined
TRL line	3	5	6					Undefined	TRL line	3	5	6					Undefined
TRL Option									TRL Option								
Cal Z₀: ___ System Z ₀ __X Line Z ₀									Cal Z₀: ___ System Z ₀ __X Line Z ₀								
Set ref: __X Thru ___ Reflect									Set ref: __X Thru ___ Reflect								

Table A-3 Standard Class Assignments for the PNA Network Analyzer

Calibration Kit Label: 2.4 mm Model 11904S		Calibration Kit Label: 2.92 mm Model 11904S	
Class	A ^a	Class	A ^a
S ₁₁ A	8	S ₁₁ A	2
S ₁₁ B	7	S ₁₁ B	1
S ₁₁ C	3	S ₁₁ C	3,5,6
S ₂₁ T	4	S ₂₁ T	4
S ₂₂ A	2	S ₂₂ A	2
S ₂₂ B	1	S ₂₂ B	1
S ₂₂ C	3	S ₂₂ C	3,5,6
S ₁₂ T	4	S ₁₂ T	4
TRL 'T'	4	TRL 'T'	4
TRL 'R'	8	TRL 'R'	2
TRL 'L'	3	TRL 'L'	3,5,6

a. For additional ports, make sure values match the correct sex of the port.

Notes:

The following calibration are only supported by certain PNA analyzers. See your PNA network analyzer embedded help system.

1. If you are performing a TRL calibration:

- S₂₁T and S₁₂T must be defined as *thru* standards.
- S₁₁A and S₂₂A must be defined as *reflection* standards.
- S₁₁B, S₁₁C, S₂₂B, and S₂₂C must be defined as *line* standards.

2. If you are performing a TRM calibration:

- S₂₁T and S₁₂T must be defined as *thru* standards.
- S₁₁A and S₂₂A must be defined as *reflection* standards.
- S₁₁B, S₁₁C, S₂₂B, and S₂₂C must be defined as *match* standards.

3. If you are performing an LRM calibration:

- S₂₁T and S₁₂T must be defined as *line* standards.
- S₁₁A and S₂₂A must be defined as *reflection* standards.
- S₁₁B, S₁₁C, S₂₂B, and S₂₂C must be defined as *match* standards.

4. S₁₁B and S₁₁C must be defined as the same standard.

5. S₂₂B and S₂₂C must be defined as the same standard.

Blank Forms

The standard class assignments may be changed to meet your specific requirements. Table A-4 through A-6 are provided to record the modified standard class assignments.

Table A-4 Blank Form for the 8510 Network Analyzer

Disk File Name:									Calibration Label:								
Class	A	B	C	D	E	F	G	Standard Class Label	Class	A	B	C	D	E	F	G	Standard Class Label
S ₁₁ A									S ₁₁ A								
S ₁₁ B									S ₁₁ B								
S ₁₁ C									S ₁₁ C								
S ₂₂ A									S ₂₂ A								
S ₂₂ B									S ₂₂ B								
S ₂₂ C									S ₂₂ C								
Forward transmission									Forward transmission								
Reverse transmission									Reverse transmission								
Forward match									Forward match								
Reverse match									Reverse match								
Forward isolation ^a									Forward isolation								
Reverse isolation									Reverse isolation								
Frequency response									Frequency response								
TRL thru									TRL thru								
TRL reflect									TRL reflect								
TRL line									TRL line								
Adapter									Adapter								
TRL Option									TRL Option								
Cal Z ₀ : ___ System Z ₀ ___ Line Z ₀									Cal Z ₀ : ___ System Z ₀ ___ Line Z ₀								
Set ref: ___ Thru ___ Reflect									Set ref: ___ Thru ___ Reflect								
Lowband frequency: _____									Lowband frequency: _____								

a. The forward isolation standard is also used for the isolation part of a response and isolation calibration.

Table A-5 Blank Form for the 8722 Network Analyzer

Calibration Label:									Calibration Label:									
Class	A	B	C	D	E	F	G	Standard Class Label	Class	A	B	C	D	E	F	G	Standard Class Label	
S ₁₁ A									S ₁₁ A									Open
S ₁₁ B									S ₁₁ B									Short
S ₁₁ C									S ₁₁ C									Loads
S ₂₂ A									S ₂₂ A									Open
S ₂₂ B									S ₂₂ B									Short
S ₂₂ C									S ₂₂ C									Loads
Forward transmission									Forward transmission									Thru
Reverse transmission									Reverse transmission									Thru
Forward match									Forward match									Thru
Reverse match									Reverse match									Thru
Response									Response									Response
Response & isolation									Response & isolation									Response
TRL thru									TRL thru									Undefined
TRL reflect								Undefined	TRL reflect									Undefined
TRL line								Undefined	TRL line									Undefined
TRL Option									TRL Option									
Cal Z ₀ : ___System Z ₀ ___Line Z ₀									Cal Z ₀ : ___System Z ₀ ___Line Z ₀									
Set ref: ___Thru ___Reflect									Set ref: ___Thru ___Reflect									

Table A-6 Blank Form for the PNA Network Analyzer

Calibration Label: _____		Calibration Label: _____	
Class	A ^a	Class	A ^a
S ₁₁ A		S ₁₁ A	
S ₁₁ B		S ₁₁ B	
S ₁₁ C		S ₁₁ C	
S ₂₁ T		S ₂₁ T	
S ₂₂ A		S ₂₂ A	
S ₂₂ B		S ₂₂ B	
S ₂₂ C		S ₂₂ C	
S ₁₂ T		S ₁₂ T	
TRL 'T'		TRL 'T'	
TRL 'R'		TRL 'R'	
TRL 'L'		TRL 'L'	

a. For additional ports, make sure values match the correct sex of the port.

Notes:

The following calibration are only supported by certain PNA analyzers. See your PNA network analyzer embedded help system.

1. If you are performing a TRL calibration:

- S₂₁T and S₁₂T must be defined as *thru* standards.
- S₁₁A and S₂₂A must be defined as *reflection* standards.
- S₁₁B, S₁₁C, S₂₂B, and S₂₂C must be defined as *line* standards.

2. If you are performing a TRM calibration:

- S₂₁T and S₁₂T must be defined as *thru* standards.
- S₁₁A and S₂₂A must be defined as *reflection* standards.
- S₁₁B, S₁₁C, S₂₂B, and S₂₂C must be defined as *match* standards.

3. If you are performing an LRM calibration:

- S₂₁T and S₁₂T must be defined as *line* standards.
- S₁₁A and S₂₂A must be defined as *reflection* standards.
- S₁₁B, S₁₁C, S₂₂B, and S₂₂C must be defined as *match* standards.

4. S₁₁B and S₁₁C must be defined as the same standard.

5. S₂₂B and S₂₂C must be defined as the same standard.

Nominal Standard Definitions

Standard definitions provide the constants needed to mathematically model the electrical characteristics (delay, attenuation, and impedance) of each calibration standard. The nominal values of these constants are theoretically derived from the physical dimensions and material of each calibration standard, or from actual measured response. These values are used to determine the measurement uncertainties of the network analyzer. The standard definitions in [Tables A-7 through A-9](#) list typical calibration parameters used by the following network analyzers to specify the mathematical model of each device. This information must be loaded into the network analyzer to perform valid calibrations. Refer to your network analyzer user's guide for instructions on loading calibration definitions.

NOTE The values in the standard definitions table are valid *only* over the specified operating temperature range.

Setting the System Impedance

This contains only 50 ohm devices. Ensure the system impedance (Z_0) is set to 50 ohms. Refer to your network analyzer user's guide for instructions on setting system impedance.

Table A-7 Standard Definitions for the 8510 with 2.92 mm Devices

Standard ^b		$C0 \times 10^{-15}$ F	$C1 \times 10^{-27}$ F/Hz	$C2 \times 10^{-36}$ F/Hz ²	$C3 \times 10^{-45}$ F/Hz ³	Fixed ^c or Sliding	Offset			Frequency in GHz		Coax or Waveguide	Standard Label
Number	Type	$L0 \times 10^{-12}$ H	$L1 \times 10^{-24}$ H/Hz	$L2 \times 10^{-33}$ H/Hz ²	$L3 \times 10^{-42}$ H/Hz ³		Delay in ps	Z_0 in Ω	Loss in G Ω /s	Min	Max		
1	Short ^d	2.1636	-146.35	4.0443	-0.0363		-17.128	50	4.16	0	999	Coax	Short
2	Open ^d	29.722	165.78	-3.5385	0.071		-18.842	50	4.47	0	999	Coax	Open
3													
4													
5	Open ^e	6.9558	-1.0259	-0.01435	0.0028		0	50	0	0	999	Coax	3.5/2.92
6	Open ^e	5.9588	-11.195	0.5076	-0.00243		0	50	0	0	999	Coax	3.5/SMA
7	Open ^e	13.4203	-1.9452	0.5459	0.01594		0	50	0	0	999	Coax	2.92/SMA
8	Open ^e	8.9843	-13.9923	0.3242	-0.00112		0	50	0	0	999	Coax	2.4/1.85
9	Load					Fixed	0	50	0	0	999	Coax	Broadband
10	Load ^f					Sliding	0	50	0	3.999	999	Coax	Sliding
11	Delay/ thru						0	50	0	0	999	Coax	Thru
12	Load					Fixed	0	50	0	0	4.001	Coax	Lowband
13	Delay/ thru						43.24	50	3.843		999	Coax	Adapter

- a. Ensure system Z_0 of network analyzer is set to this value.
- b. Open, short, load, delay/thru, or arbitrary impedance.
- c. Load or arbitrary impedance only.
- d. Typical values only. Disk values may be different.
- e. This standard type (open) is used to accurately model the adapter listed in the Standard Label column.
- f. For use with Option 001 only.

Table A-8 Standard Definitions for the 872x Series with 2.92 mm Devices

System $Z_0^a = 50.0 \Omega$		Calibration Label: [2.92*]											
Standard ^b		C0 $\times 10^{-15}$ F	C1 $\times 10^{-27}$ F/Hz	C2 $\times 10^{-36}$ F/Hz ²	C3 $\times 10^{-45}$ F/Hz ³	Fixed ^c or Sliding	Offset			Frequency in GHz		Coax or Waveguide	Standard Label
Number	Type						Delay in ps	Z_0 in Ω	Loss in G Ω /s	Min	Max		
1	Short						-17.047	50	0	0	999	Coax	Short
2	Open	33.17	-208.65	7.34	-0.020		-18.764	50	0	0	999	Coax	Open
3	Load					Fixed	0	50	0	0	999	Coax	Broadband
4	Delay/ thru						0	50	0	0	999	Coax	Thru
5	Load ^d					Sliding	0	50	0	3.999	999	Coax	Sliding
6	Load					Fixed	0	50	0	0	4.001	Coax	Lowband
7													
8													

- a. Ensure system Z_0 of network analyzer is set to this value.
- b. Open, short, load, delay/thru, or arbitrary impedance.
- c. Load or arbitrary impedance only.
- d. For use with Option 001 only.

Table A-9 Standard Definitions for the PNA Series with 2.92 mm Devices - Broadband Load

System $Z_0^a = 50.0 \Omega$				Calibration Kit Label: Model 85056K 2.4 mm / 2.92 mm Broadband Load Cal Kit								
Standard ^b				$C0 \times 10^{-18} F$	$C1 \times 10^{-30} F/Hz$	$C2 \times 10^{-39} F/Hz^2$	$C3 \times 10^{-48} F/Hz^3$	Offset			Frequency in GHz	
Number	Label	Description	Connector/Sex	$L0 \times 10^{-12} H$	$L1 \times 10^{-24} H/Hz$	$L2 \times 10^{-33} H/Hz^2$	$L3 \times 10^{-45} H/Hz^3$	Delay in ps	$Z_0 \Omega$	Loss in $G\Omega/s$	Min	Max
				Fixed / Sliding	Arbitrary Imp	Offset Load	Ω / s					
1	BROAD BAND LOAD -M-	2.4 mm male broad band load	2.92 mm MALE	FIXED	OFF	OFF		0	50	0	0	999
4	OPEN -M-	2.4 mm male open	2.92 mm MALE	29.722	165.780	3.53850	0.071	-18.842	50	4.47	0	999
9	SHORT -M-	2.4 mm male short	2.92 mm MALE	2.1636	-146.35	4.0443	-0.0363	-17.128	50	4.16	0	999
12	BROAD BAND LOAD -F-	2.4 mm female broad band load	2.92 mm FEMALE	FIXED	OFF	OFF		0	50	0	0	999
13	OPEN -F-	2.4 mm female open	2.92 mm FEMALE	29.722	165.780	3.53850	0.071	-18.842	50	4.47	0	999
18	SHORT -F-	2.4 mm female short	2.92 mm FEMALE	2.1636	-146.35	4.0443	-0.0363	-17.128	50	4.16	0	999
19	THRU	2.4 mm / 2.92 mm adapter pair	2.92 mm FEMALE / MALE					.0001	50	0	0	999

- a. Ensure system Z_0 of network analyzer is set to this value.
b. Open, short, load, delay/thru, or arbitrary impedance.

Blank Forms

The standard definitions may be changed to meet your specific requirements. Table A-10 through A-12 are provided to record the modified standard definitions.

Table A-10 Blank Form for the 8510 Network Analyzer

System $Z_0^a =$ _____							Calibration Kit Label: _____						
Disk File Name: _____													
Number	Type	Standard ^b		Offset		Frequency in GHz		Coax or Waveguide	Standard Label				
		$C0 \times 10^{-15} \text{ F}$	$C1 \times 10^{-27} \text{ F/Hz}$	$C2 \times 10^{-36} \text{ F/Hz}^2$	$C3 \times 10^{-45} \text{ F/Hz}^3$	Delay	Z_0 in Ω			Loss in G Ω /s	Min	Max	
		$L0 \times 10^{-12} \text{ H}$	$L1 \times 10^{-24} \text{ H/Hz}$	$L2 \times 10^{-33} \text{ H/Hz}^2$	$L3 \times 10^{-42} \text{ H/Hz}^3$	Fixed ^c or sliding							
1													
2													
3													
4													
5													
6													
7													
8													
9													
10													
11													
12													
13													
14													
15													
16													
17													
18													
19													
20													
21													

- a. Ensure system Z_0 of network analyzer is set to this value.
- b. Open, short, load, delay/thru, or arbitrary impedance.
- c. Load or arbitrary impedance only.

Table A-11 Blank Form for the 872x Series Network Analyzer

System $Z_0^a =$ _____		Calibration Label: _____											
Standard ^b		C0 $\times 10^{-15}$ F	C1 $\times 10^{-27}$ F/Hz	C2 $\times 10^{-36}$ F/Hz ²	C3 $\times 10^{-45}$ F/Hz ³	Fixed ^c or Sliding	Offset			Frequency in GHz		Coax or Waveguide	Standard Label
Number	Type						Delay in ps	Z_0 in Ω	Loss in G Ω /s	Min	Max		
1													
2													
3													
4													
5													
6													
7													
8													

- a. Ensure system Z_0 of network analyzer is set to this value.
- b. Open, short, load, delay/thru, or arbitrary impedance.
- c. Load or arbitrary impedance only.

Table A-12 Blank Form for the PNA Series Network Analyzers

System $Z_0^a =$ _____		Calibration Kit Label: _____													
Number	Type	Standard ^b					Fixed or sliding	Offset			Frequency in GHz ^c		Coax or Waveguide	Standard Label	
		$C0 \times 10^{-18}$ F	$C1 \times 10^{-30}$ F/Hz	$C2 \times 10^{-39}$ F/Hz ²	$C3 \times 10^{-48}$ F/Hz ³			Delay in ps	$Z_0 \Omega$	Loss in GΩ/s	Min	Max			
1		$L0 \times 10^{-12}$ H	$L1 \times 10^{-24}$ H/Hz	$L2 \times 10^{-33}$ H/Hz ²	$L3 \times 10^{-45}$ H/Hz ³										
2															
3															
4															
5															
6															
7															
8															

- a. Ensure system Z_0 of network analyzer is set to this value.
- b. Open, short, load, delay/thru, or arbitrary impedance.
- c. For waveguide, the lower frequency is the same as F_{CO} .

A

accuracy
connector gage, 3-12
adapter set
overview, 1-2
part numbers
drawing of, 6-3
performance
how Agilent verifies, 4-2
verifying, 4-2
adapters, 1-2
part numbers, 6-2
drawing of, 6-3
agilent technologies
contacting, 5-3
alcohol, isopropyl
as cleaning solvent, 3-10
part number, 6-4
precautions for use of, 3-10
altitude specifications, 2-2
assistance
contacting agilent, 5-4

B

blank form
standard class assignments,
A-6
standard definitions, A-13
box, part number, 6-2

C

calibration, 3-5
bad, 5-2
certificate of, 4-3
definitions, A-9
disk, part number, 6-2
full 2-port overview, 3-5
report, 4-3
standards, A-2
case, part number, 6-2
certificate of calibration, 4-3
certification
of device specifications, 2-5
characteristics
mechanical, 2-3
class assignments
blank form, A-6
standard, A-2
cleaning
connectors, 3-10
supplies
part number, 6-4

compatible network analyzers,
1-3

component identification
sheet, 6-3

compressed air
for cleaning, 3-10

conductive mat
part number, 6-4

connections, 3-2, 3-16
final, 3-17

preliminary, 3-16

separating, 3-18

using torque wrench, 3-17

connector

cleaning, 3-10

damage, 3-3

defects, 3-3

female, 3-4

gage

accuracy, 3-12

part number, 6-4

use of, 3-12

zeroing, 3-12, 3-13

gaging, 3-12

procedure, 3-13

to determine pin depth,
3-12

when to do, 3-13

mating plane surfaces

cleaning, 3-11

sex, 1-4

slotless, 3-4

threads

cleaning, 3-10

visual inspection, 3-3

wear, 3-3

affect on electrical
performance, 3-3

contacting agilent
technologies, 5-3

contents

adapter set, 1-2

drawing of, 6-3

incomplete

what to do, 1-3

D

damage
device, 3-3, 5-2

data

recertification, 4-3

defective connectors, 3-3

definitions

calibration, A-9

part numbers, 6-2

standard, A-9

device

cleaning, 3-10

connecting, 3-16

damage, 3-3

disconnecting, 3-18

handling, 3-22

maintenance, 1-5

performance

verifying, 4-2

specifications, 2-5

certification of, 2-5

electrical, 2-5

traceability, 4-2, 4-3

storage, 3-22

temperature, 2-2

visual inspection, 3-3

disconnections, 3-18

disk

calibration definitions

part number, 6-2

specifications and

performance

part number, 6-2

documentation, part number,
6-2

E

electrical

characteristics

effects of temperature, 2-2

specifications, 2-5

electrostatic discharge, 3-2

environmental

regulations, 3-10

requirements, 2-2

specifications, 2-2

equipment required, 1-3, 6-2

ESD, 3-2

precautions, 3-2

supplies

part numbers, 6-4

F

female connectors, 3-4

flowchart, troubleshooting, 5-2

full size 2-port calibration, 3-5

G

gage set

Index

- part number, 6-4
- gage, zeroing, 3-13
- gaging
 - connectors, 3-12, 3-13
 - when to gage, 3-13
 - to determine pin depth, 3-12
- general information, 1-1

H

- handling, 3-22
- heel strap, part number, 6-4
- humidity, specifications, 2-2

I

- impedance, system, A-9
- incoming inspection, 1-3
- information, troubleshooting, 5-3
- inspection
 - damage, 3-3
 - female connectors, 3-4
 - incoming, 1-3
 - mating plane surfaces, 3-3
 - visual, 3-3
- isopropyl alcohol
 - as cleaning solvent, 3-10
 - part number, 6-4
 - precautions for use of, 3-10

L

- limits, pin depth, 2-4

M

- maintenance, 3-2
 - of devices, 1-5
 - preventive, 1-5
- making connections, 3-16
 - precautions, 3-16
- manual
 - part number, 6-2
- mat, conductive
 - part number, 6-4
- mating plane surfaces
 - cleaning, 3-11
 - inspection of, 3-3
- mechanical characteristics, 2-3
 - affect on electrical performance, 2-3
 - verifying, 3-12
- MIL-STD 45662
 - calibration, 4-3

N

- National Institute of Standards and Technology (NIST), 2-5, 4-2
- network analyzers, compatible, 1-3
- nitrogen, for cleaning, 3-10
- nominal standard definitions, A-9
- numbers
 - replaceable parts, 6-2, 6-4
 - serial, 1-4

O

- observed limits
 - pin depth, 2-4
- offset opens and shorts
 - part numbers, 6-2
 - specifications, 2-5
- open-end wrench, 1-2, 3-18, 6-2
 - part number, 6-2
- ordering, parts, 6-2, 6-4

P

- part numbers, 6-2
 - of items in kit, 6-2
 - of items not in kit, 6-4
- parts
 - included in kit, 1-2, 6-2
 - not included in kit, 6-4
 - ordering, 6-2
 - replaceable, 6-2
- performance
 - and specifications disk
 - part number, 6-2, 6-4
- performance test, 4-2
- performance verification
 - failure, 5-2
- pin depth, 2-3
 - affect on electrical performance, 2-4
 - gaging to determine, 3-12
 - observed limits, 2-4, 3-12
 - protrusion, 2-3
 - recession, 2-3
 - typical values, 2-4
- precision adapters, 1-2
- preventive maintenance, 1-5
- procedures
 - cleaning, 3-10
 - gaging, 3-13
 - torque wrench, 3-17
- protrusion, pin depth, 2-3

R

- recertification
 - how to order, 4-3
 - interval, 4-3
 - locations, 4-3
 - services included, 4-3
- recession, pin depth, 2-3
- regulations, environmental, 2-2, 3-10
- replaceable parts, 6-2, 6-4
 - drawing of, 6-3
- report, calibration, 4-3
- requirements, environmental, 2-2
- residual errors, 2-5
- return kit or device to Agilent, 1-3, 5-3

S

- separating connections, 3-18
- serial numbers, 1-4
 - devices, 1-4

- recording, 1-4
- service, 5-3
- service tag, 4-3, 5-3
- set
 - contents, 1-2, 6-3
 - drawing of, 6-3
- sex, connector, 1-4
- specifications, 2-2
 - and performance disk
 - part number, 6-2, 6-4
 - certification of, 2-5
 - electrical, 2-5
 - environmental, 2-2
 - temperature, 2-2
 - torque wrench, 3-17
 - traceability, 4-2, 4-3
- standard class assignments, A-2
 - blank form, A-6
 - PNA, A-5, A-8
- standard definitions
 - blank forms, A-13
 - nominal, A-9
- standards
 - international, 2-5
 - National Institute of Standards and Technology (NIST), 2-5, 4-2
- static discharge, 3-2
- storage, 3-22
- storage case, part number, 6-2
- strap
 - heel and wrist, part number, 6-4
- supplies, cleaning
 - part number, 6-4
- swabs, cleaning, 3-10
- system impedance, A-9

T

- table mat
 - part number, 6-4
- tag, service, 4-3, 5-3
- temperature
 - affect on electrical performance, 2-2
 - specification, 2-2
- test data, 4-3
- test, performance, 4-2
- threads, connector
 - cleaning, 3-10
 - inspecting, 3-3
- torque wrench
 - part number, 6-2
 - specifications, 3-17
 - use of, 3-17
- traceability
 - of device specifications, 4-2, 4-3
- troubleshooting flowchart, 5-2

U

- user's and service guide
 - part number, 6-2

V

- verification
 - performance, 4-3
 - temperature, 2-2
- visual inspection, 3-3

W

- wear, connector, 3-3
 - affect on electrical performance, 3-3
- wrench
 - open-end, 3-17, 3-18, 6-2
 - proper positioning of, 3-17
 - torque, 3-17, 3-18, 6-2
 - proper use, 3-17
- wrist strap, part number, 6-4

Z

- zeroing connector gage, 3-13